

‘But is it on the critical path?’

Notes from an evening seminar held on the 12 May 2005 for the Adjudication Society Seminar in the London office of Ove Arup

Speaker

Peter Curtis – Ladymead Projects Ltd

Agenda

- **Introduction to critical path analysis**
- **How its used in practice**
- **Some things for adjudicators to look out for in progress monitoring and reporting**
- **Views on the SCL Delay and Disruption Protocol**

For further information please contact Peter Curtis:


Phone 01483 534 192

E mail petercurtis@ladymeadprojects.com

Web www.ladymeadprojects.com

Slide 1

Project Planning



Adjudication Society
12 May 2005
Peter Curtis
Ladymead Projects

Slide 2

Agenda

- Introduction to Critical Path Analysis
- How its used in practice
- Some things for Adjudicators to look out for in progress monitoring and reporting
- SCL Delay and Disruption Protocol
- Questions and Answers

© Ladymead Projects

Slide 3

Ladymead Projects

- Project management and training consultants
 - Helping clients improve the way they manage projects
 - Developing and better processes and procedures
 - Change management
 - Specialist technical support
 - Project planning and delay analysis
 - Risk and value management
 - Project audits, health checks, monitoring
 - Project launch and workshop facilitation
 - Bespoke training courses
 - Dispute resolution
- Course providers for the CIOB Adjudication courses
- www.ladymeadprojects.com


© Ladymead Projects

Slide 4

Why Plan ?

"The great thing about not planning is that failure comes as a complete surprise and isn't preceded by periods of worry and depression."

Sir John Harvey Jones




© Ladymead Projects

Slide 5

Critical Path Analysis

Introduction to Critical Path Analysis

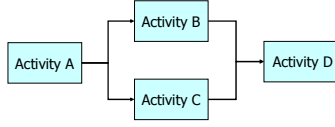


© Ladymead Projects

Slide 6

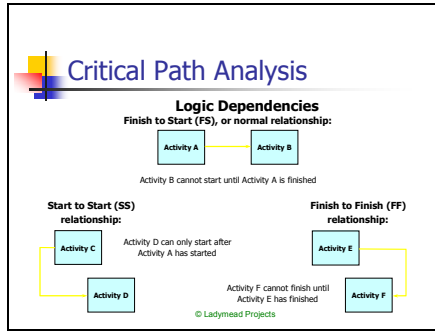
Critical Path Analysis

Precedence Method (Activity-on-Node)

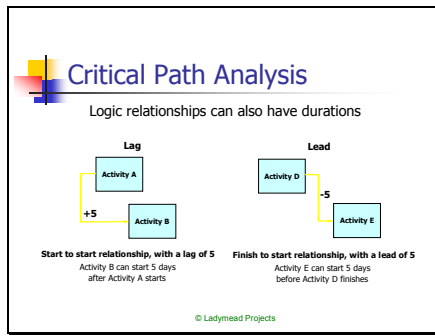


© Ladymead Projects

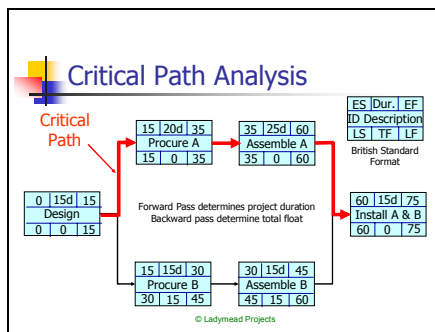
Slide 7



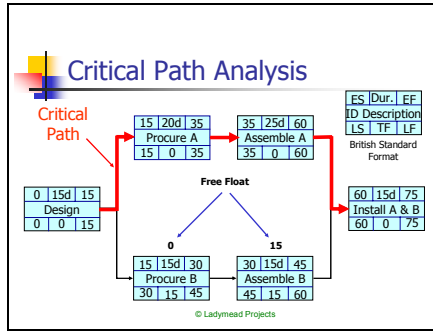
Slide 8



Slide 9



Slide 10



Slide 11



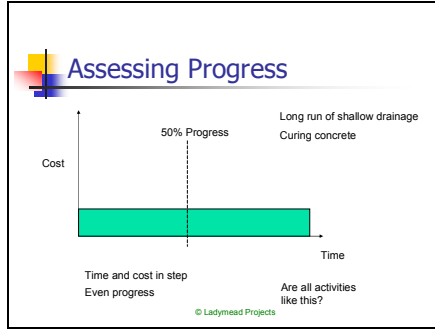
Slide 12

Progress Monitoring

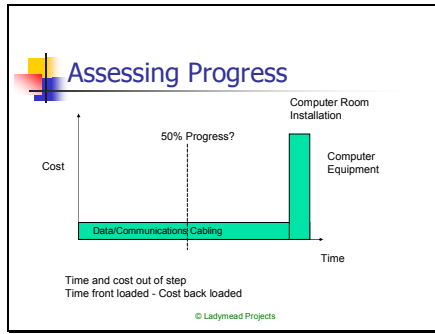
- Is progress monitoring a simple process?
- Here are some of the issues

© Ladymead Projects

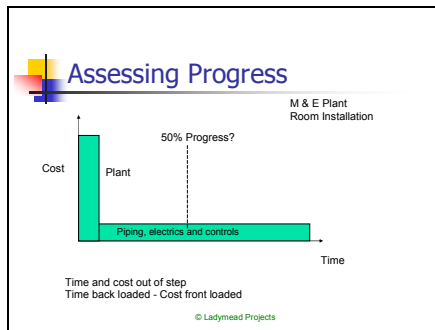
Slide 13



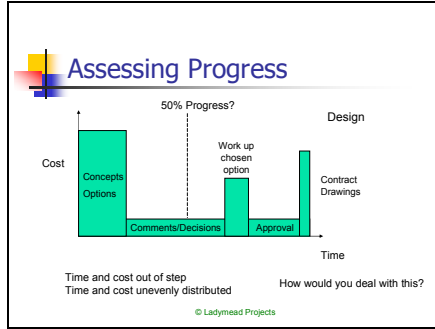
Slide 14



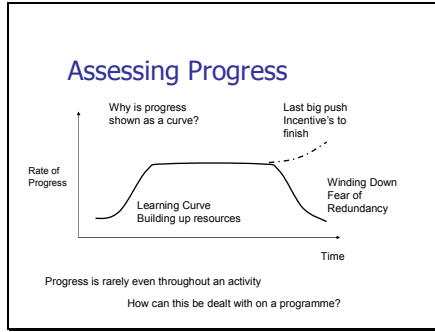
Slide 15



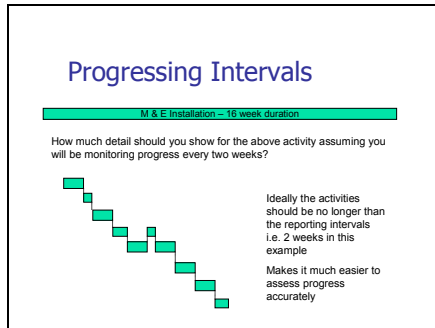
Slide 16



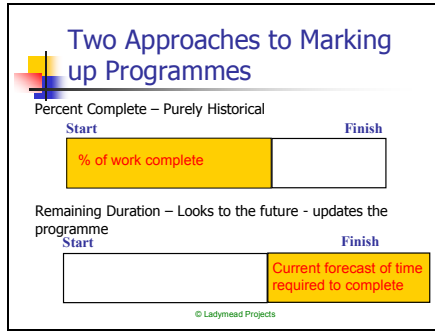
Slide 17



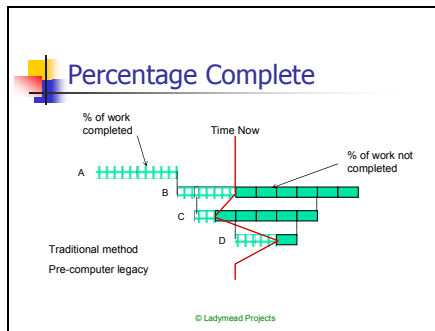
Slide 18



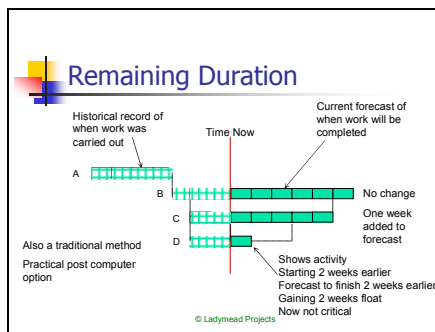
Slide 19



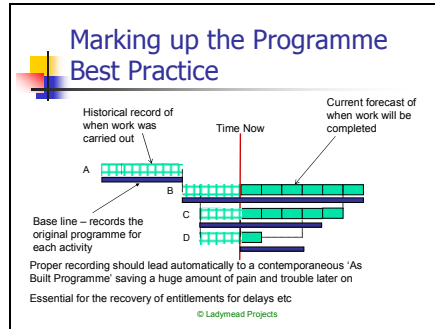
Slide 20



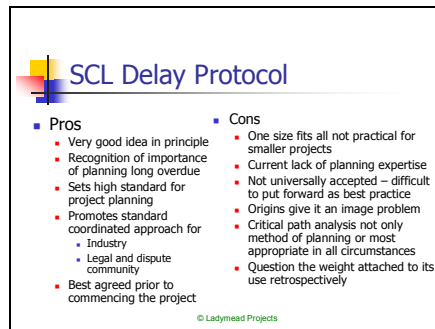
Slide 21



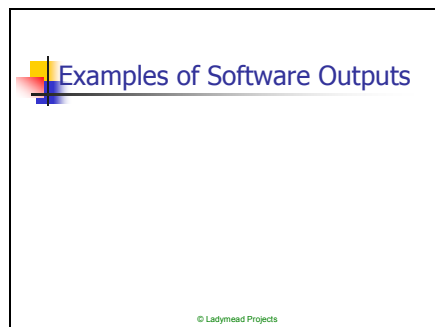
Slide 22



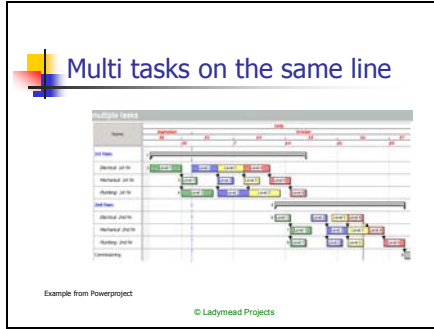
Slide 23



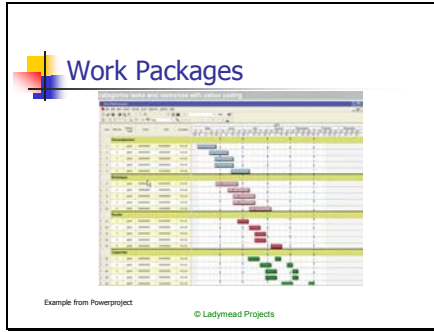
Slide 24



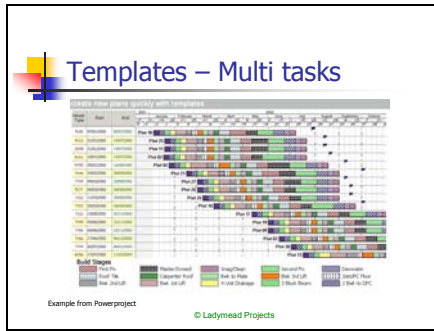
Slide 25



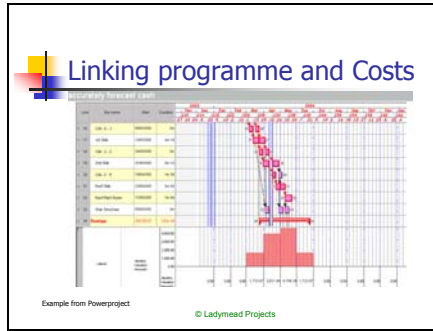
Slide 26



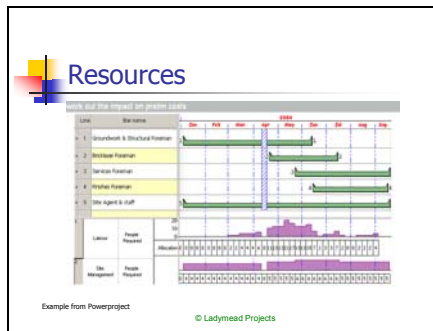
Slide 27



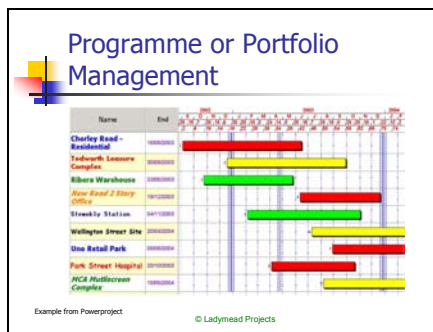
Slide 28



Slide 29



Slide 30



Slide 31

